

Moray & Aberdeenshire Forest District

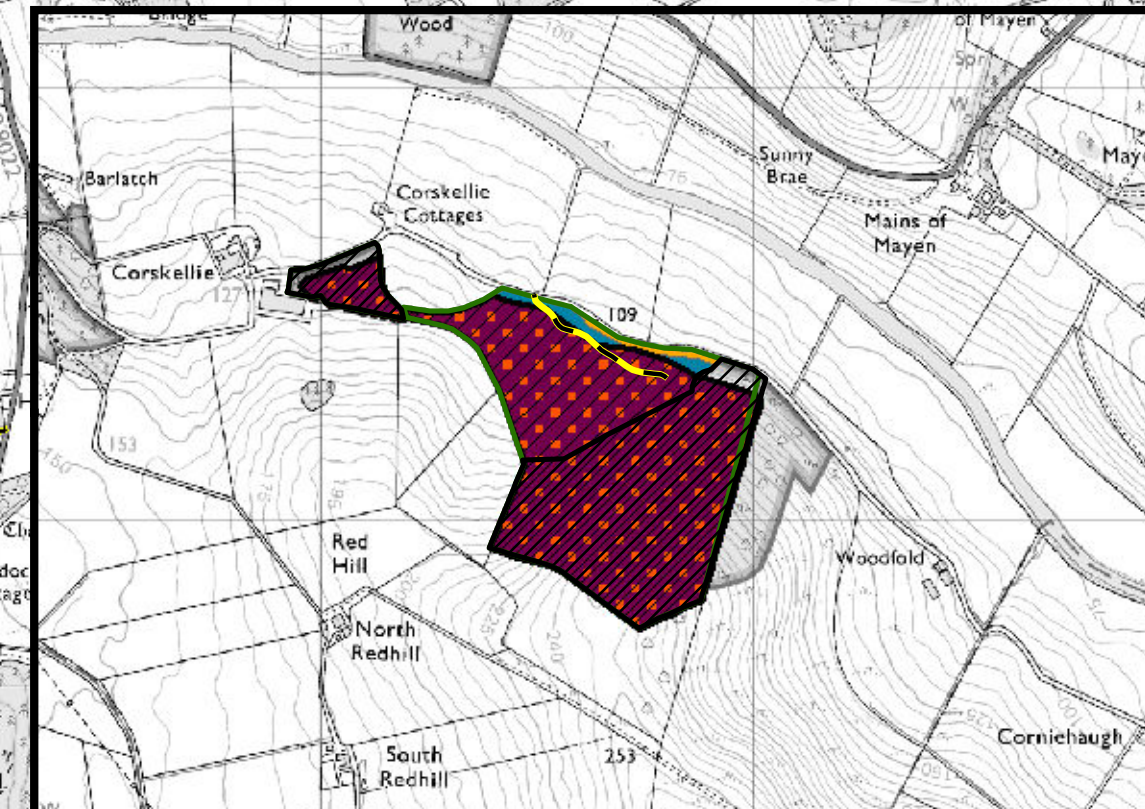
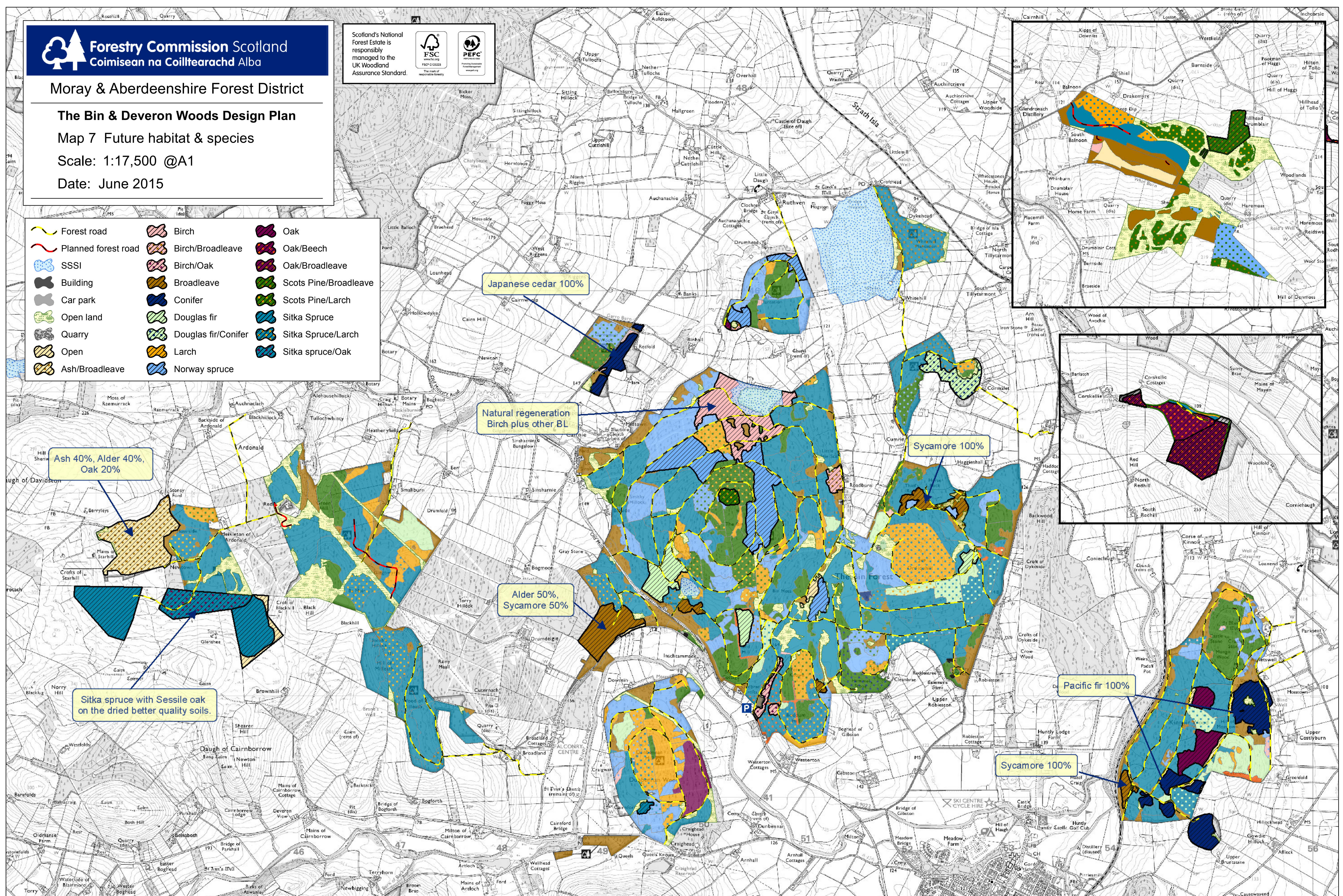
The Bin & Deveron Woods Design Plan

Map 7 Future habitat & species

Scale: 1:17,500 @A1

Date: June 2015

- | | | |
|--|--|--|
| | | |
| | | |
| | | |
| | | |
| | | |
| | | |
| | | |
| | | |
| | | |



Ash 40%, Alder 40%, Oak 20%

Japanese cedar 100%

Natural regeneration Birch plus other BL

Sycamore 100%

Alder 50%, Sycamore 50%

Sitka spruce with Sessile oak on the dried better quality soils.

Pacific fir 100%

Sycamore 100%