

# PITMEDDEN FOREST BLOCK

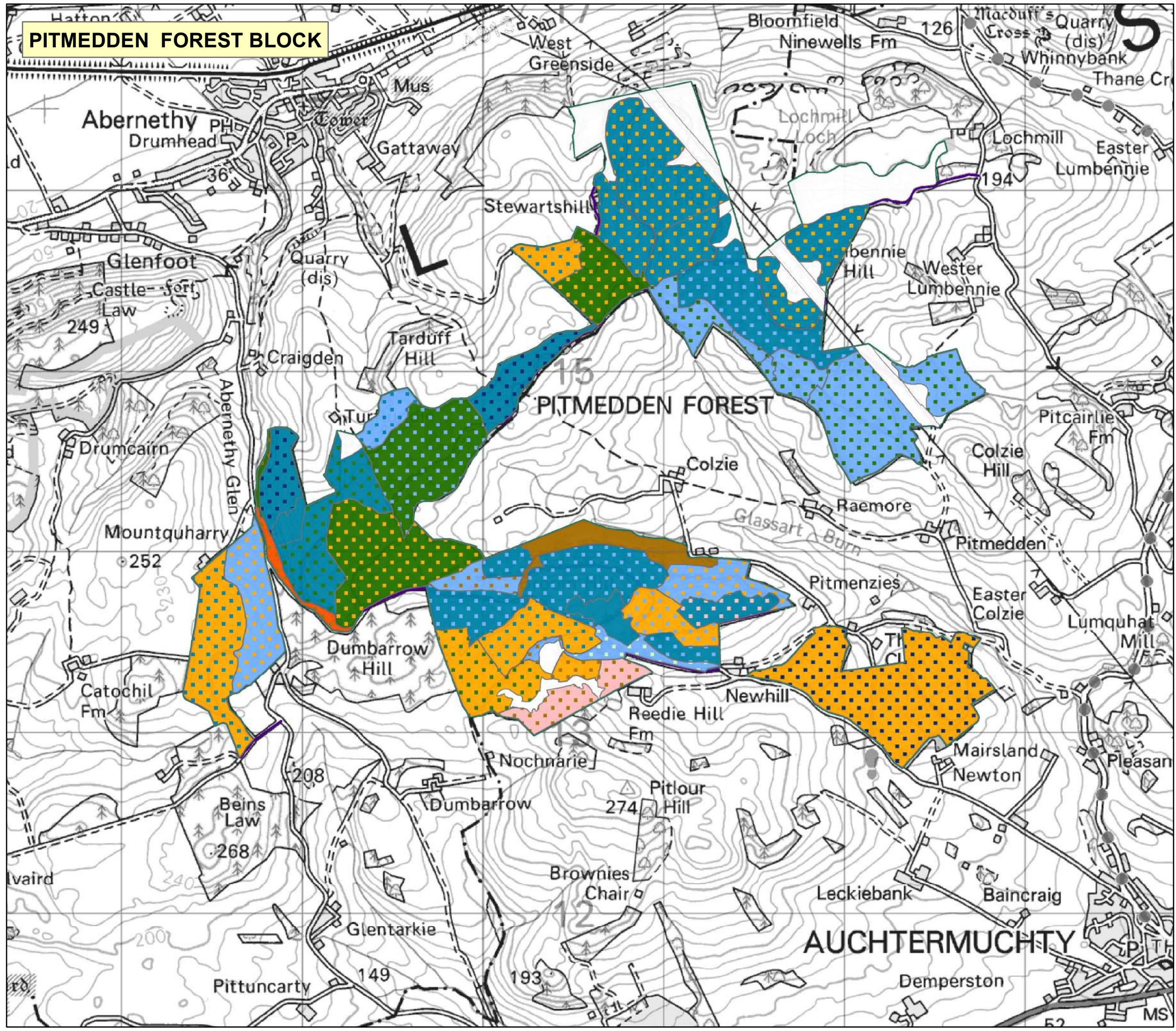
Tay Forest District

## Pitmedden & Weddersbie Forest Design Plan

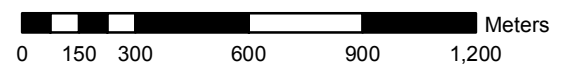
Map 5: Future Habitats & Species Map (1 of 2)

Scale: 1:20,000

Date: January 2012



- Forest Design Plan Boundary
- Sitka spruce (SS)
- Norway spruce (NS)
- Lodgepole pine (LP)
- Scots pine (SP)
- Larch sp (EL/HL/JL)
- Douglas fir (DF)
- Mixed/ other conifers (MC/XC)
- Birch (BI)
- Oak (OK)
- Ash (AH)
- Beech (BE)
- Mixed/ other broadleaves (MB/XB)
- Open land
- Species Mixture: Main colour = Dominant species  
Dots = Secondary species  
Sitka spruce with Birch shown here





**WEDDERSBIE FOREST BLOCK**

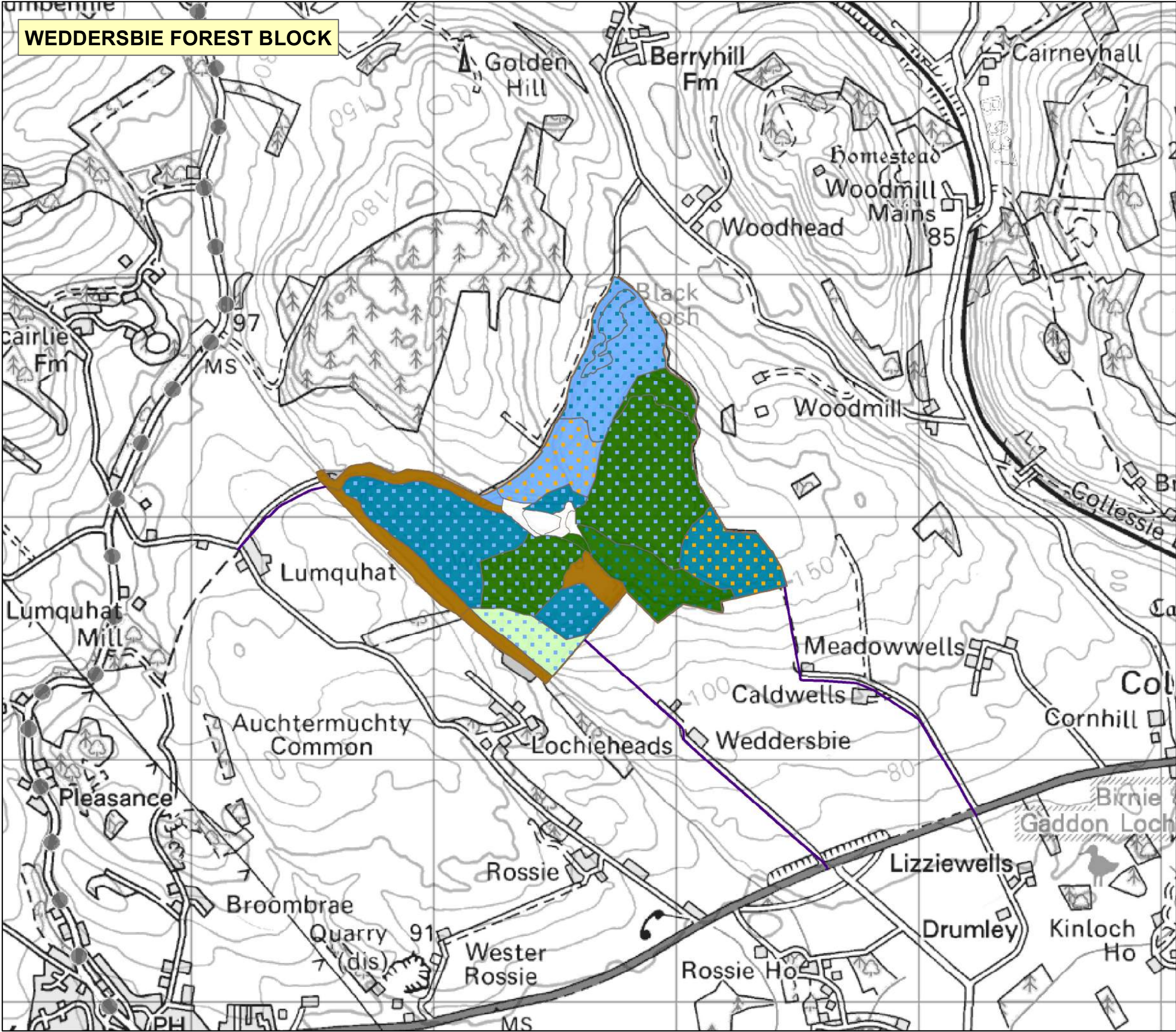
Tay Forest District

**Pitmedden & Weddersbie  
Forest Design Plan**

Map 5: Future Habitats & Species Map  
(2 of 2)

Scale: 1:15,000

Date: January 2012



- Forest Design Plan Boundary
- Sitka spruce (SS)
- Norway spruce (NS)
- Lodgepole pine (LP)
- Scots pine (SP)
- Larch sp (EL/HL/JL)
- Douglas fir (DF)
- Mixed/ other conifers (MC/XC)
- Birch (BI)
- Oak (OK)
- Ash (AH)
- Beech (BE)
- Mixed/ other broadleaves (MB/XB)
- Open land
- Species Mixture: Main colour = Dominant species  
Dots = Secondary species  
Sitka spruce with Birch shown here

