

PITMEDDEN FOREST BLOCK

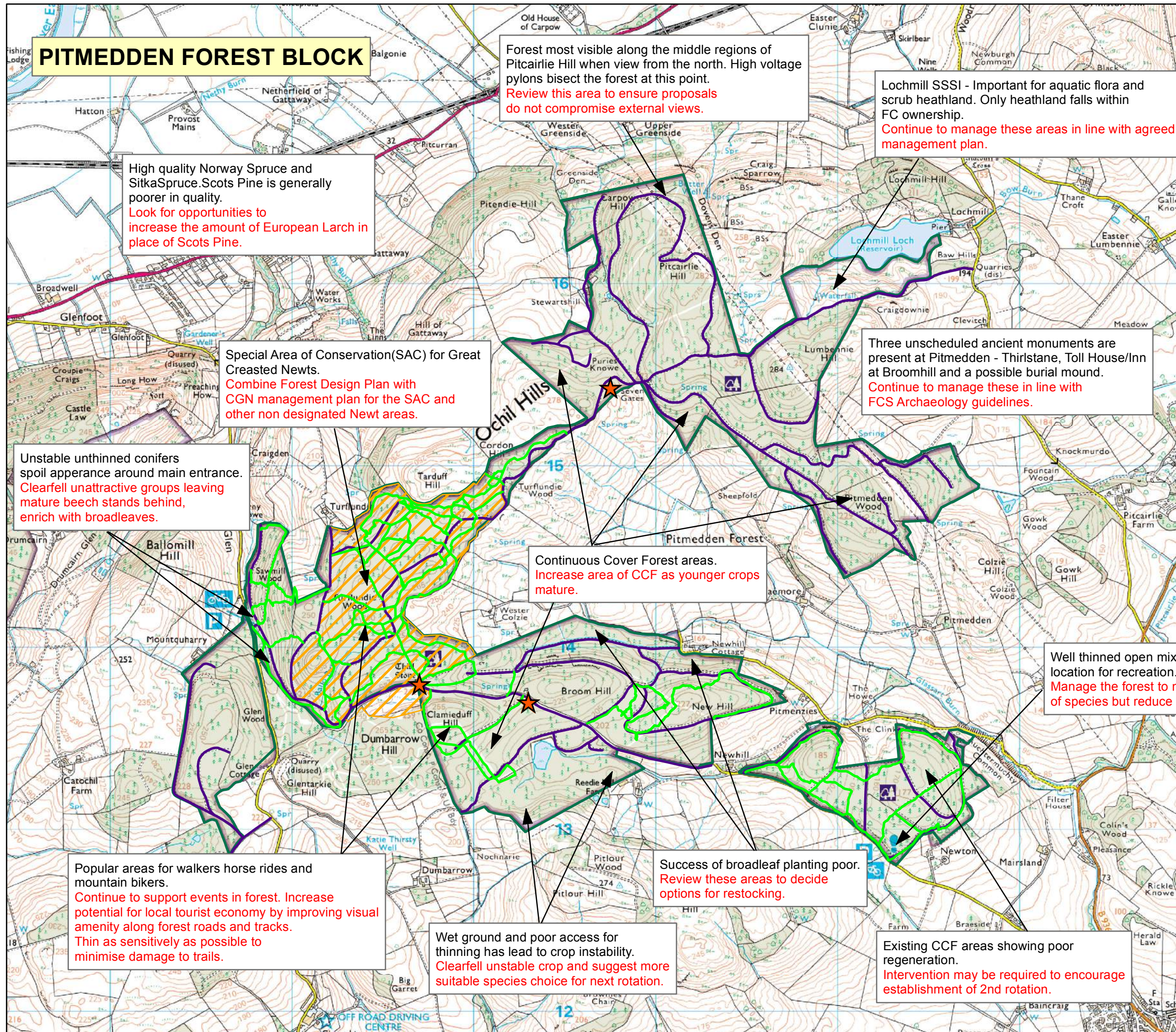
Tay Forest District

Pitmedden & Weddersbie Forest Design Plan

Map 3: Analysis & Concept Map (1 of 2)

Scale: 1:20,000

Date: January 2012



Forest most visible along the middle regions of Pitcairle Hill when view from the north. High voltage pylons bisect the forest at this point.
Review this area to ensure proposals do not compromise external views.

Lochmill SSSI - Important for aquatic flora and scrub heathland. Only heathland falls within FC ownership.
Continue to manage these areas in line with agreed management plan.

High quality Norway Spruce and Sitka Spruce. Scots Pine is generally poorer in quality.
Look for opportunities to increase the amount of European Larch in place of Scots Pine.

Special Area of Conservation (SAC) for Great Crested Newts.
Combine Forest Design Plan with CGN management plan for the SAC and other non designated Newt areas.

Three unscheduled ancient monuments are present at Pitmedden - Thirlstane, Toll House/Inn at Broomhill and a possible burial mound.
Continue to manage these in line with FCS Archaeology guidelines.

Unstable unthinned conifers spoil appearance around main entrance.
Clearfell unattractive groups leaving mature beech stands behind, enrich with broadleaves.

Continuous Cover Forest areas.
Increase area of CCF as younger crops mature.

Well thinned open mixed conifers, attractive location for recreation.
Manage the forest to maintain the mix of species but reduce Sitka Spruce and Western Hemlock.

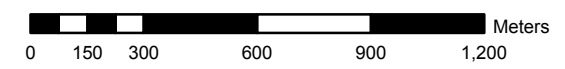
Popular areas for walkers horse rides and mountain bikers.
Continue to support events in forest. Increase potential for local tourist economy by improving visual amenity along forest roads and tracks. Thin as sensitively as possible to minimise damage to trails.

Success of broadleaf planting poor.
Review these areas to decide options for restocking.

Wet ground and poor access for thinning has led to crop instability.
Clearfell unstable crop and suggest more suitable species choice for next rotation.

Existing CCF areas showing poor regeneration.
Intervention may be required to encourage establishment of 2nd rotation.

- ★ UAM
- Informal trails
- Road Segments
- ▨ SAC
- ▭ Management Area



**Pitmedden & Weddersbie
Forest Design Plan**

Map 3: Analysis & Concept Map (2 of 2)

Scale: 1:20,000

Date: January 2012

-  Road Segments
-  Management Area

