



Legend

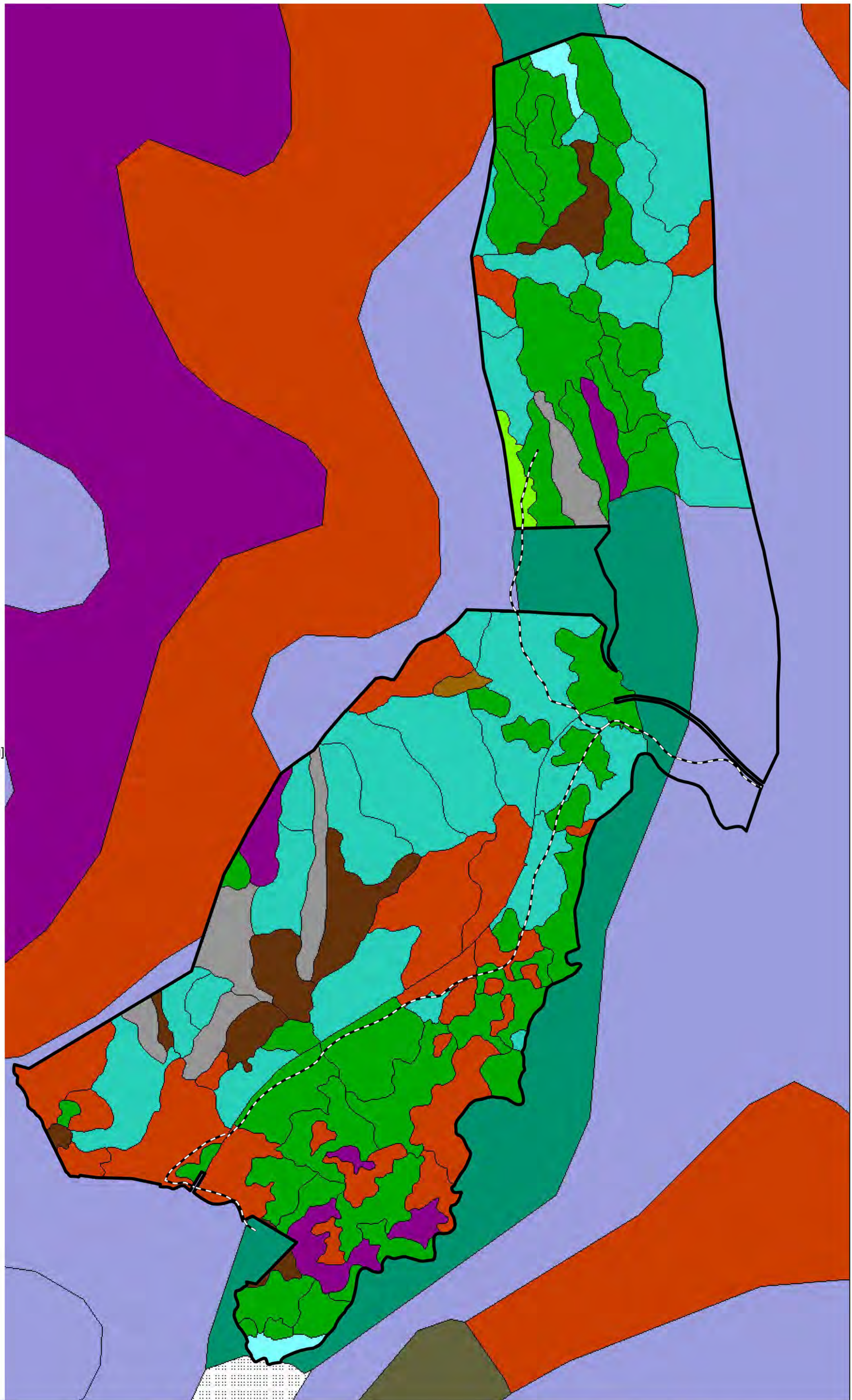
Forest roads and tracks

--- Forest roads and tracks

▭ FLS Legal boundary

▨ <all other values>

- 1 [Typical brown earth]
- 1d [Basic brown earth]
- 1u [Upland brown earth]
- 1z [Podzolic brown earth]
- 2s [Mining spoil, stony or coarse textured]
- 2m [Mining spoil, shaly or fine textured]
- 3 [Typical podzol]
- 3m [Hardpan podzol]
- 4 [Typical ironpan]
- 4z [Podzolic ironpan]
- 4b [Intergrade ironpan]
- 5 [Typical ground-water gley]
- 5b [Brown ground-water gley]
- 5c [Ground-water gley]
- 6 [Typical peaty surface-water gley]
- 6z [Podzolic peaty surface-water gley]
- 7 [Typical surface-water gley]
- 7z [Podzolic surface-water gley]
- 7b [Brown surface-water gley]
- 8a [Phragmites (or Fen) bog]
- 8b [Juncus articulatus or acutiflorus bog]
- 8c [Juncus effusus bog]
- 8d [Carex bog]
- 9a [Molinia, Myrica, Salix bog]
- 9b [Tussocky Molinia, Calluna bog]
- 9c [Tussocky Molinia, Erioph. vag. bog]
- 9d [Non-tussocky Molinia, Erioph. vag., Trichoph. bog]
- 9e [Trichoph., Calluna, Erioph., Molinia bog]
- 10a [Lowland Sphagnum bog]
- 10b [Upland Sphagnum bog]
- 11a [Calluna blanket bog]
- 11b [Calluna, Erioph. vag. blanket bog]
- 11c [Trichoph., Calluna blanket bog]
- 11d [Erioph. blanket bog]
- 12a [Rendzina]
- 12b [Calcareous brown earth]
- 12t [Argillic brown earth]
- 13b [Brown ranker]
- 13c [Ranker complex]
- 13g [Gley ranker]
- 13p [Peaty ranker]
- 13z [Podzolic ranker]
- 13r [Rock]
- 13s [Scree]
- 14 [Shallow hagged eroded bog]
- 14h [Deeply hagged eroded bog]
- 14w [Pooled eroded bog]
- 15s [Shingle]
- 15d [Dunes]
- 15e [Sand with deep water-table]
- 15i [Sand with moderately deep water-table]
- 15g [Sand with shallow water-table]
- 15w [Sand with very shallow water-table]
- VC [Valley complex]



West Region

South Mull Land Management Plan

Map 3.1 Soils by largest component - Ishriff

Scale: 1:10,000

Date: March 2017



Scotland's National Forest Estate is responsibly managed to the UK Woodland Assurance Standard



Reproduced by permission of Ordnance Survey on behalf of HMSO. © Crown copyright and database right [2016]. All rights reserved. Ordnance Survey Licence number [100021242]

