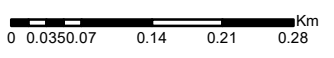


Map 3.2 Water features

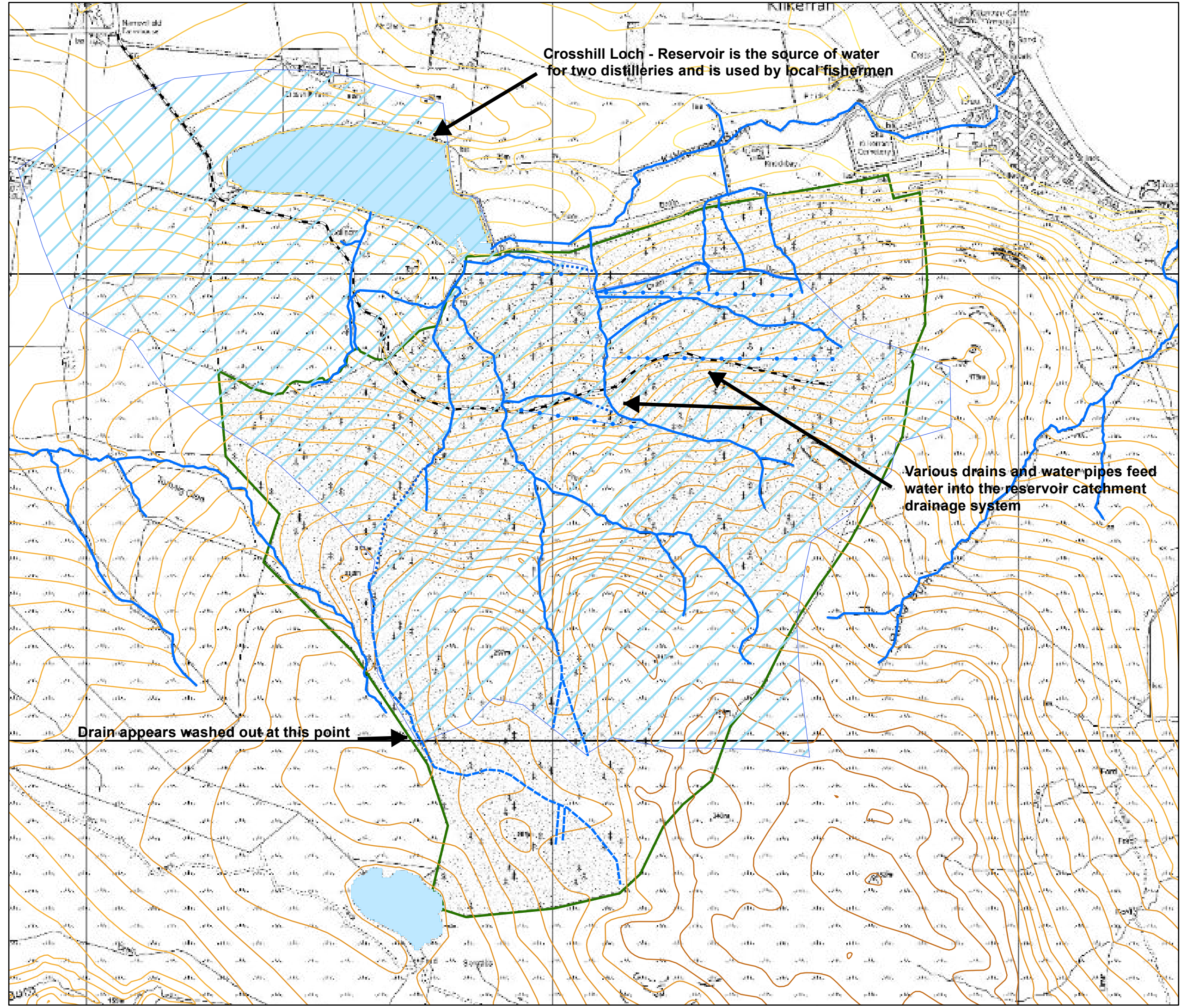
Author: R.Wilson
Scale @ A3: 1:7,500
Date: 15/11/2021

Legend

- ⋯ Additional drains
- Drains
- Watercourses
- proposed roads
- Water Pipelines
- Reservoir catchment
- - - Forest Roads
- High
- Medium
- Low
- Blocks



Reproduced by permission of Ordnance Survey on behalf of HMSO.
© Crown copyright and database right [2021]. All rights reserved.
Ordnance Survey Licence number [100021242].
© Getmapping Plc and Bluesky International Limited 2021.



Crosshill Loch - Reservoir is the source of water for two distilleries and is used by local fishermen

Various drains and water pipes feed water into the reservoir catchment drainage system

Drain appears washed out at this point