



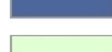
**M8: Concept Future Species**

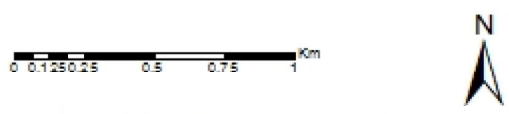
Author: Robin Almond

Scale @ A3: 1:27,000

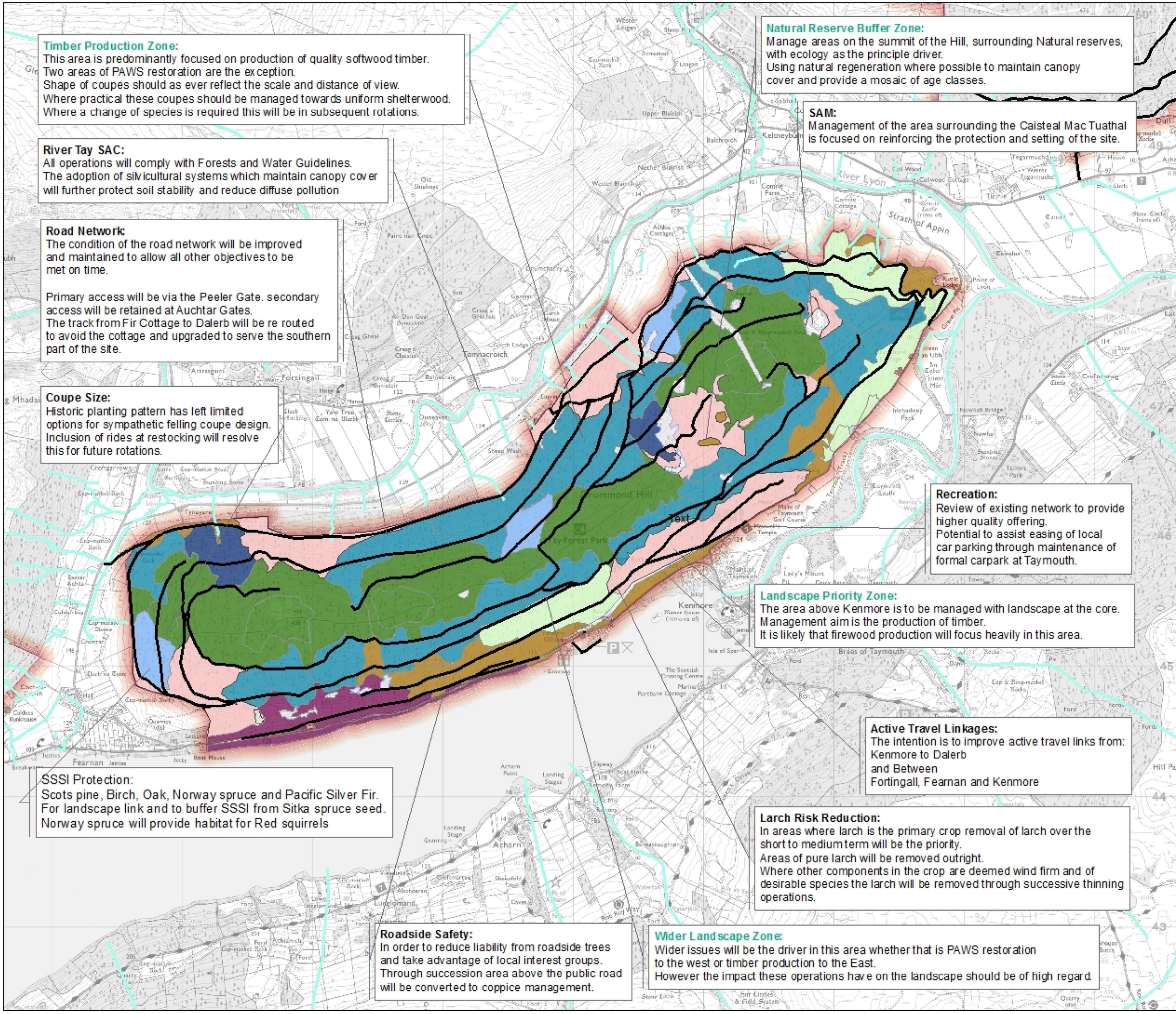
Date: 19/10/2021

**Legend**

-  Forest Roads
-  Watercourses
-  Scotlands Forests and Lands
-  Open
-  Birch
-  Oak
-  Other Broadleaves
-  Other Conifers
-  Douglas Fir
-  Norway Spruce
-  Scots Pine
-  Sitka Spruce



Reproduced by permission of Ordnance Survey on behalf of HM SO.  
© Crown copyright and database right (2021). All rights reserved.  
Ordnance Survey Licence number 1000212423.  
© Getmapping Plc and Bluesky International Limited 2021.



**Timber Production Zone:**  
This area is predominantly focused on production of quality softwood timber. Two areas of PAWS restoration are the exception. Shape of coupes should as ever reflect the scale and distance of view. Where practical these coupes should be managed towards uniform shelterwood. Where a change of species is required this will be in subsequent rotations.

**Natural Reserve Buffer Zone:**  
Manage areas on the summit of the Hill, surrounding Natural reserves, with ecology as the principle driver. Using natural regeneration where possible to maintain canopy cover and provide a mosaic of age classes.

**River Tay SAC:**  
All operations will comply with Forests and Water Guidelines. The adoption of silvicultural systems which maintain canopy cover will further protect soil stability and reduce diffuse pollution

**SAM:**  
Management of the area surrounding the Caisteal Mac Tuathal is focused on reinforcing the protection and setting of the site.

**Road Network:**  
The condition of the road network will be improved and maintained to allow all other objectives to be met on time.  
  
Primary access will be via the Peeler Gate. secondary access will be retained at Auchtar Gates. The track from Fir Cottage to Dalerb will be re routed to avoid the cottage and upgraded to serve the southern part of the site.

**Coupe Size:**  
Historic planting pattern has left limited options for sympathetic felling coupe design. Inclusion of rides at restocking will resolve this for future rotations.

**Recreation:**  
Review of existing network to provide higher quality offering. Potential to assist easing of local car parking through maintenance of formal carpark at Taymouth.

**Landscape Priority Zone:**  
The area above Kenmore is to be managed with landscape at the core. Management aim is the production of timber. It is likely that firewood production will focus heavily in this area.

**SSSI Protection:**  
Scots pine, Birch, Oak, Norway spruce and Pacific Silver Fir. For landscape link and to buffer SSSI from Sitka spruce seed. Norway spruce will provide habitat for Red squirrels

**Active Travel Linkages:**  
The intention is to improve active travel links from: Kenmore to Dalerb and Between Forthingall, Fearnan and Kenmore

**Larch Risk Reduction:**  
In areas where larch is the primary crop removal of larch over the short to medium term will be the priority. Areas of pure larch will be removed outright. Where other components in the crop are deemed wind firm and of desirable species the larch will be removed through successive thinning operations.

**Roadside Safety:**  
In order to reduce liability from roadside trees and take advantage of local interest groups. Through succession area above the public road will be converted to coppice management.

**Wider Landscape Zone:**  
Wider issues will be the driver in this area whether that is PAWS restoration to the west or timber production to the East. However the impact these operations have on the landscape should be of high regard.