

**M3: Soil**

Author: FLS Planning

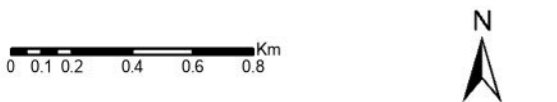
Scale @ A3: 1:25,000

Date: 4/16/2025

**Legend**

**Loch Chon Soils**

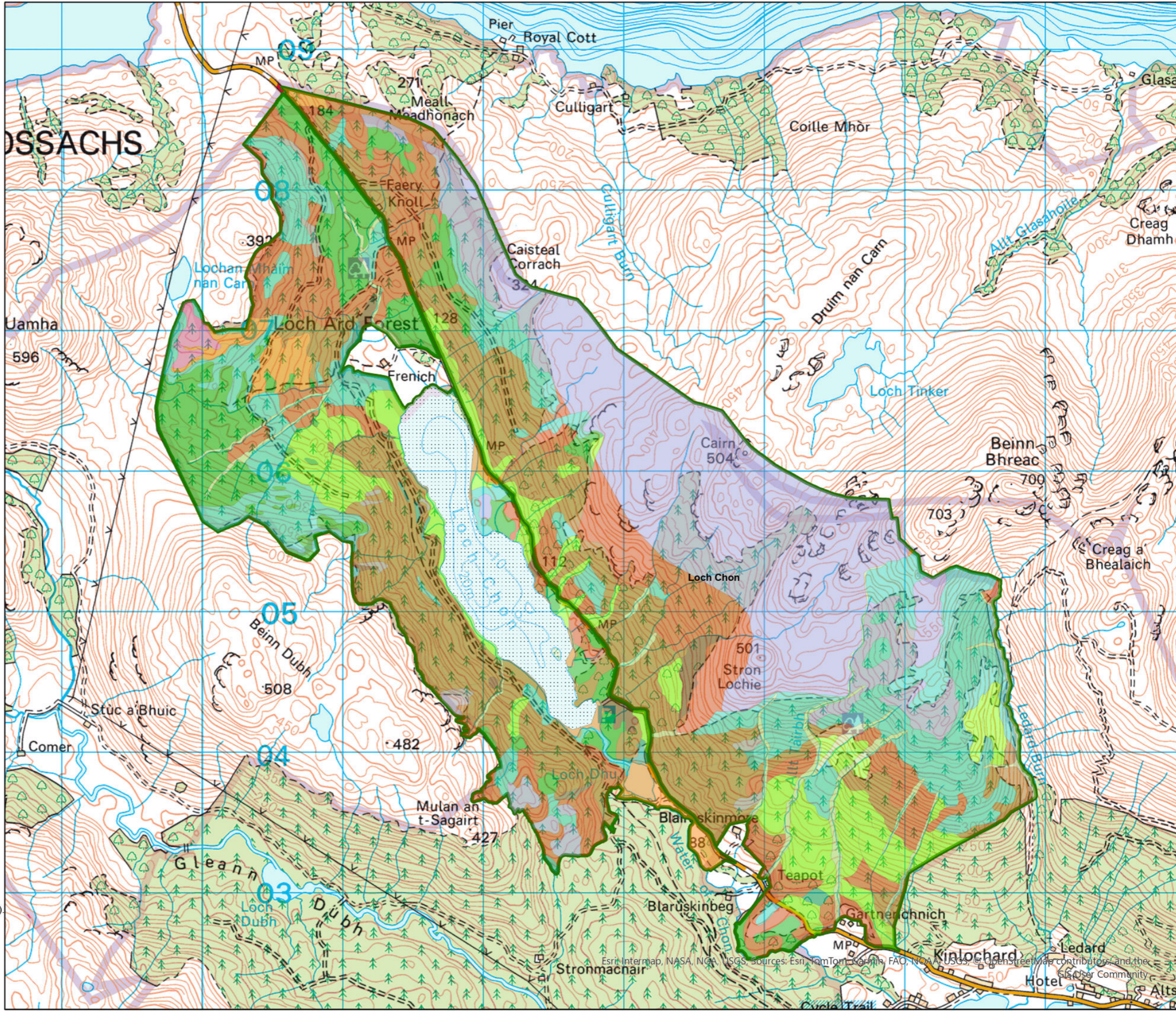
	1 [Typical Brown Earth]		9c [Tussocky Molinia, Eriophorum vaginatum Bog]
	1u [Upland Brown Earth]		9d [Non-Tussocky Molinia, Eriophorum vaginatum, Trichophorum Bog]
	1z [Podzolic Brown Earth]		9e [Trichophorum, Calluna, Eriophorum, Molinia Bog (Weakly Flushed)]
	3 [Typical Podzol]		10b [Upland Sphagnum Bog]
	4 [Typical Ironpan Soil]		11b [Calluna, Eriophorum vaginatum Blanket Bog]
	4b [Intergrade Ironpan Soil]		11c [Trichophorum, Calluna Blanket Bog]
	6 [Typical Peaty Surface-Water Gley]		13g [Gley Ranker]
	6z [Podzolic Peaty Surface-Water Gley]		13r [Rock]
	7 [Typical Surface-Water Gley]		13c [Ranker Complex]
	7z [Podzolic Surface-Water Gley]		VC [Valley Complex]
	7b [Brown Surface-Water Gley]		Not Surveyed
	8b [Juncus articulatus or acutiflorus Bog]		LMP Boundary
	8c [Juncus effusus Bog]		
	9b [Tussocky Molinia Bog, Molinia, Calluna Bog]		



Reproduced by permission of Ordnance Survey on behalf of HMSO. © Crown copyright and database right [2025]. All rights reserved. Ordnance Survey Licence number [100024925]. © Getmapping Plc and Bluesky International Limited 2025.

Declaration by FLS as an Operator. All timber arising from the FLS National Forests and Land represents a negligible risk under EUTR (No 995/210).

Scotland's National Forest Estate is responsibly managed to the UK Woodland Assurance Standard.



Esri, Intermap, NASA, NOAA, USGS, sources: Esri, TomTom, Garmin, FAO, NOAA, USGS, © OpenStreetMap contributors, and the GIS User Community