



Limerigg Forests Soils

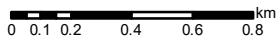
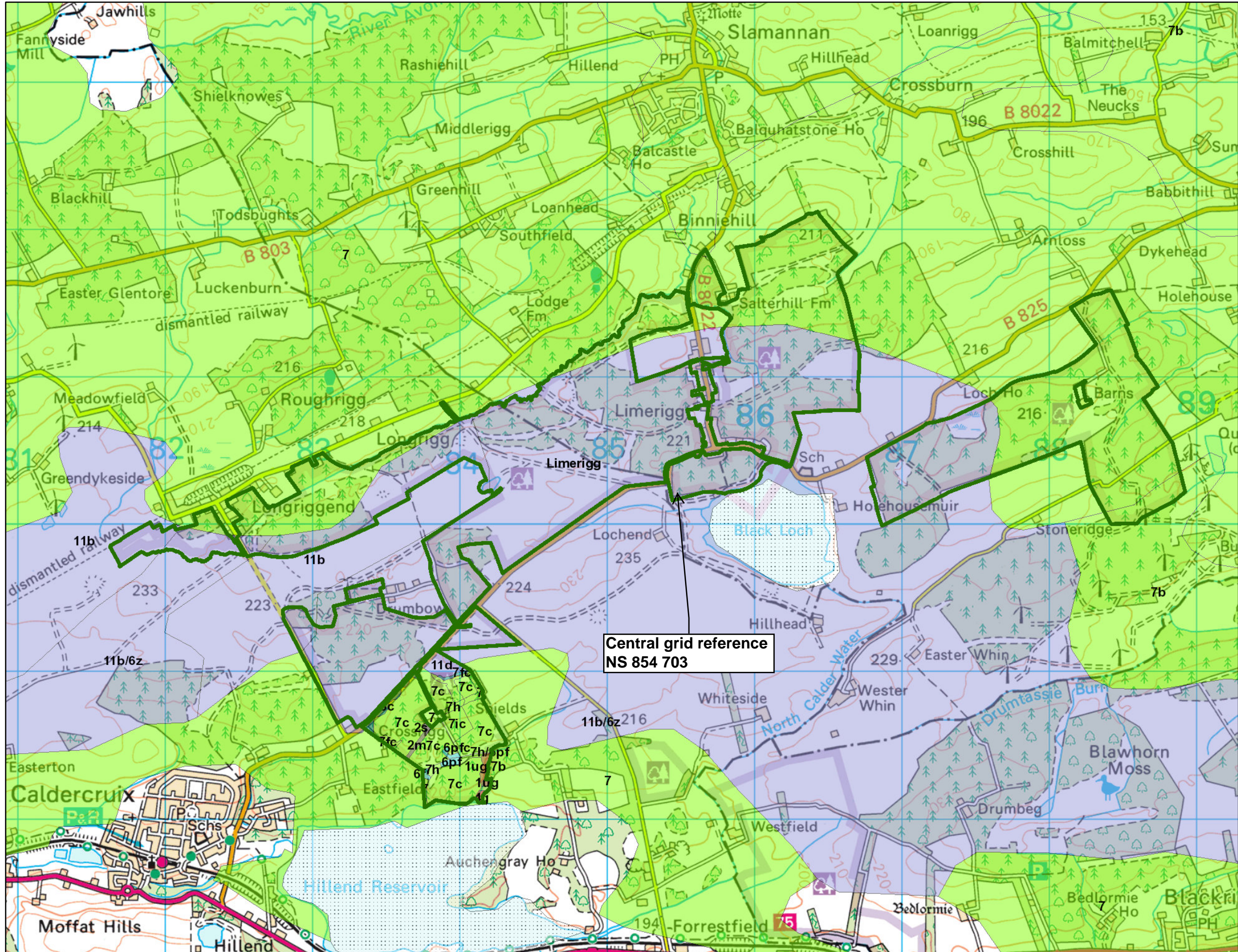
Author: Sandy Davidson

Scale @ A3: 1:25,000

Date: 17/01/2022

Legend (continued on 2nd page)

Blocks



Reproduced by permission of Ordnance Survey on behalf of HMSO. © Crown copyright and database right 2022. All rights reserved. Ordnance Survey Licence number 100024925. © Getmapping Plc and Bluesky International Limited 2022.

Scotland's national forests and land are responsibly managed to the UK Woodland Assurance Standard.



	Blocks		9d [Non-Tussocky Molinia, Eriophorum vaginatum, Trichophorum Bog]
Soils Polygons			9e [Trichophorum, Calluna, Eriophorum, Molinia Bog (Weakly Flushed)]
	Not Surveyed		10a [Lowland Sphagnum Bog]
	1 [Typical Brown Earth]		10b [Upland Sphagnum Bog]
	1d [Basic Brown Earth]		11a [Calluna Blanket Bog]
	1u [Upland Brown Earth]		11b [Calluna, Eriophorum vaginatum Blanket Bog]
	1z [Podzolic Brown Earth]		11c [Trichophorum, Calluna Blanket Bog]
	2s [Mining Spoil, Stony or Coarse Textured]		11d [Eriophorum Blanket Bog]
	2m [Mining Spoil, Shaly or Fine Textured]		12a [Rendzina]
	3 [Typical Podzol]		12b [Calcareous Brown Earth]
	3m [Hardpan Podzol]		12t [Argillic Brown Earth]
	4 [Typical Ironpan Soil]		13b [Brown Ranker]
	4z [Podzolic Ironpan Soil]		13g [Gley Ranker]
	4b [Intergrade Ironpan Soil]		13p [Peaty Ranker]
	5 [Typical Ground-Water Gley]		13z [Podzolic Ranker]
	5b [Brown Ground-Water Gley]		13r [Rock]
	6 [Typical Peaty Surface-Water Gley]		13s [Scree]
	6z [Podzolic Peaty Surface-Water Gley]		13c [Ranker Complex]
	7 [Typical Surface-Water Gley]		14 [Shallow Hagged Eroded Bog]
	7z [Podzolic Surface-Water Gley]		14h [Deeply Hagged Eroded Bog]
	7b [Brown Surface-Water Gley]		14w [Pooled Eroded Bog]
	8a [Phragmites (or Fen) Bog]		15s [Shingle]
	8b [Juncus articulatus or acutiflorus Bog]		15d [Dunes]
	8c [Juncus effusus Bog]		15e [Sand with Deep Water-Table (or Excessively Drained Sand)]
	8d [Carex Bog]		15i [Sand with Moderately Deep Water-Table]
	9a [Molinia, Myrica, Salix Bog]		15g [Sand with Shallow Water-Table]
	9b [Tussocky Molinia Bog, Molinia, Calluna Bog]		15w [Sand with Very Shallow Water-Table]
	9c [Tussocky Molinia, Eriophorum vaginatum Bog]		VC [Valley Complex]