

LMP Name Elchies

Block Name (If necessary)

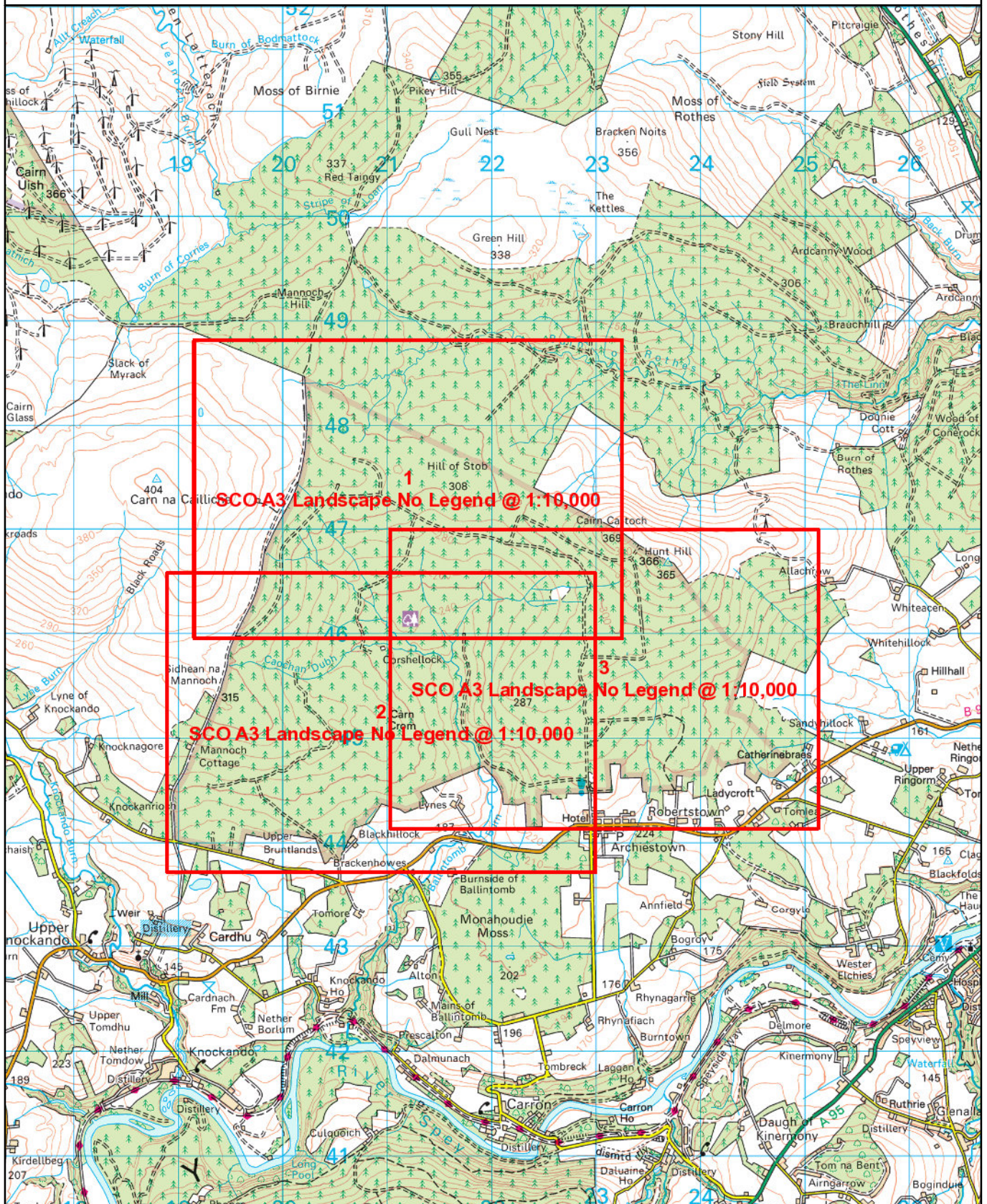
Thinning Maps

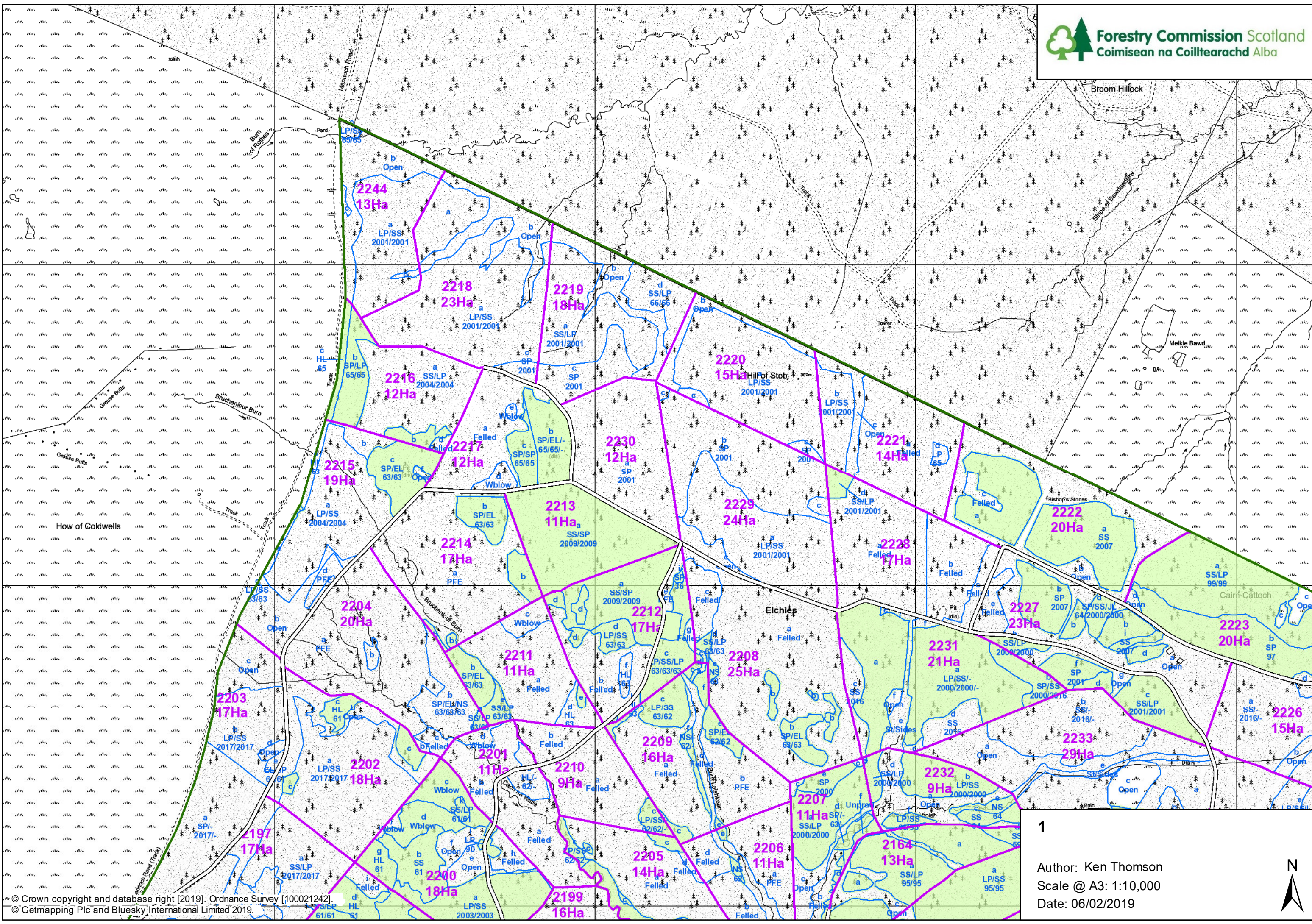
LMP Approval Number - FDP 10.5.20

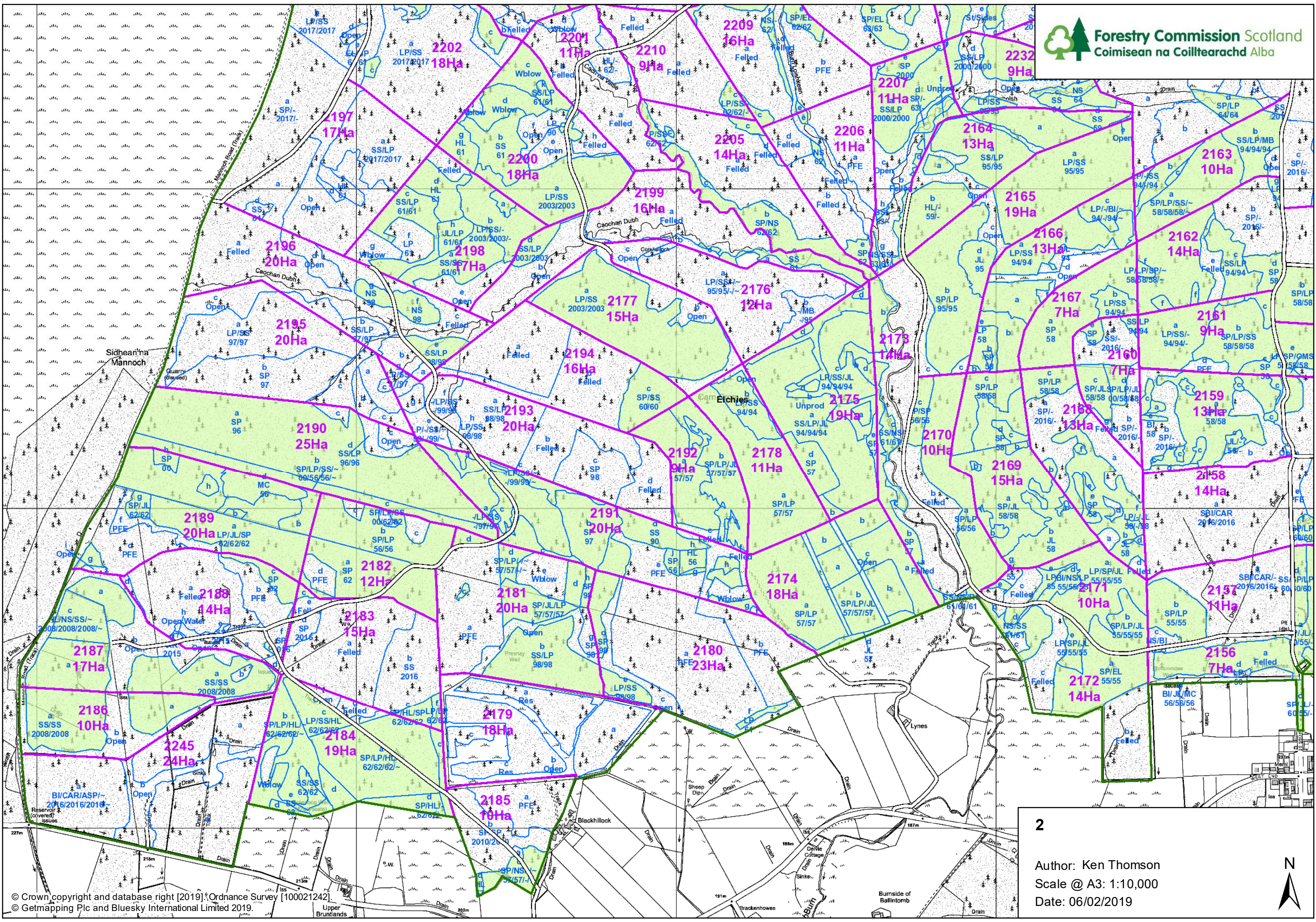
Scotland's National
Forest Estate is
responsibly
managed to the
UK Woodland
Assurance Standard.

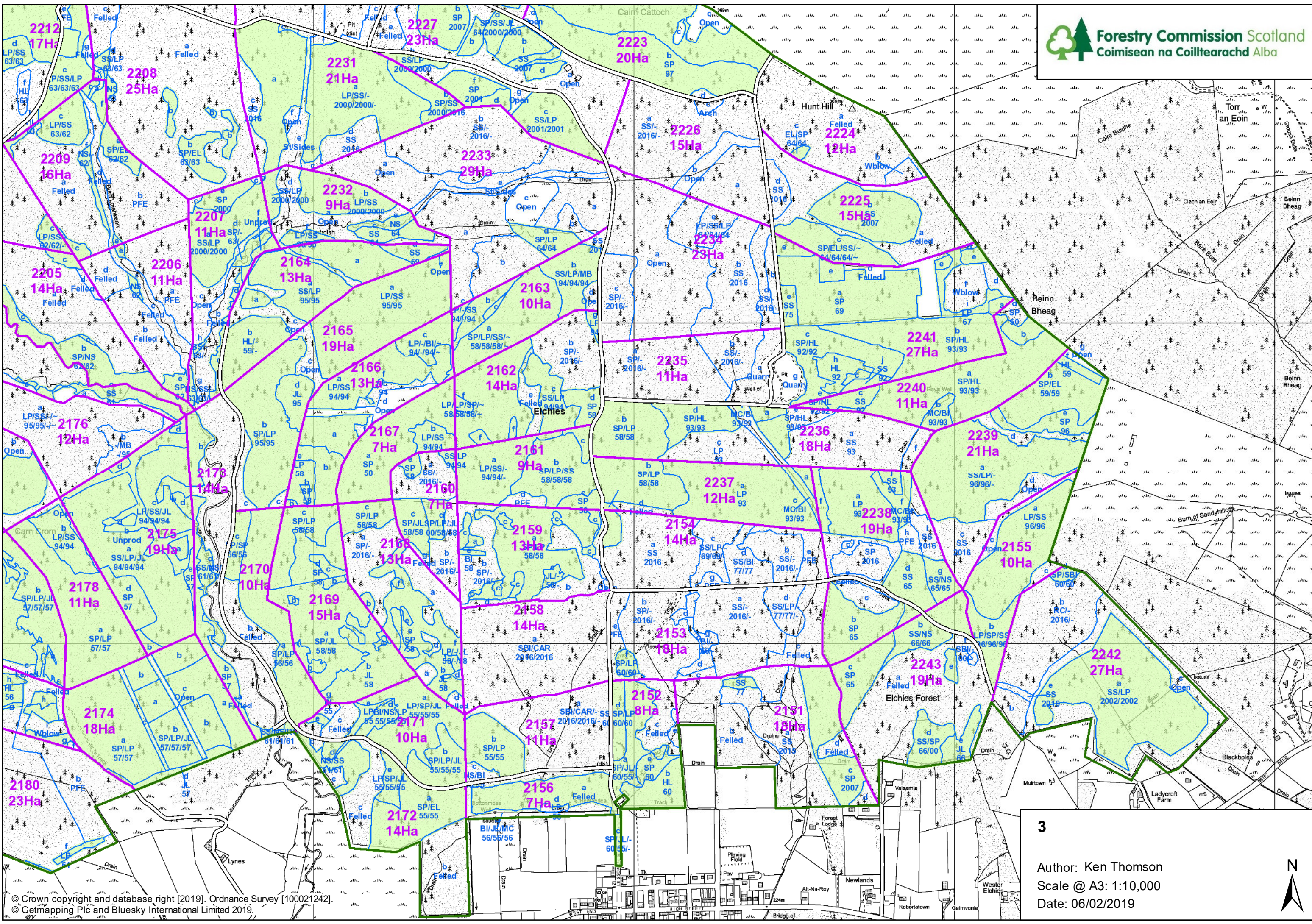


Thinning will normally be carried out at, or below, the level of marginal thinning intensity (i.e. removing no more than 70% of the maximum MAI, or YC, per year). Higher intensities (no more than 140 % of maximum MAI, or YC, per year) may be applied where thinning has been delayed, larger tree sizes are being sought or as part of a LISS prescription. In all cases work plans will define the detailed thinning prescription before work is carried out and operations will be monitored by checking pre and post thinning basal areas for the key crop components.










Blocks

 Blocks

Forest Roads


 Forest Roads

Compartments

 Compartments

Sub-compartments

 Sub-compartments

 Thinning_area_new