

NB. changes to neighbouring woodland are not illustrated

Cowal & Trossachs Forest District
Beinn Bhan LMP

View 2 Bruach Caorainn
Grid Ref: NN416001
Date: 22nd January 2018

Visualisation of forest management proposals

Visualisation year

2018

2028

Felling Phases have a rolling 5 year period and for visualisations start on the date shown above.

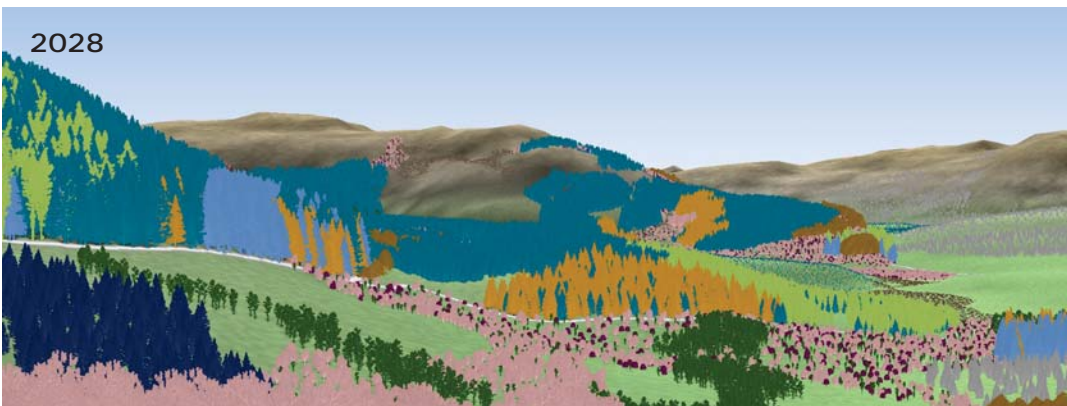
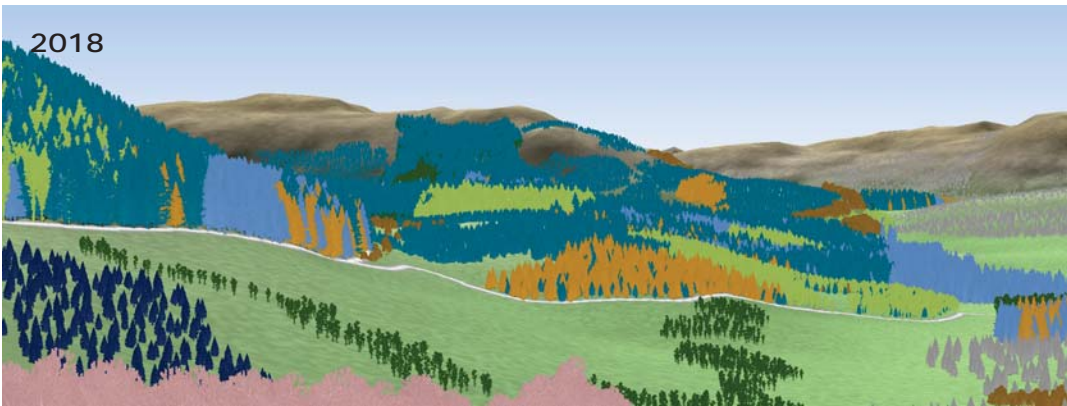
- Phase 1 (1-5 years)
- Phase 2 (6-10 years)
- Phase 3 (11-15 years)
- Phase 4 (16-20 years)
- Phase 5 (21-25 years)
- Phase 6 (26-30 years)
- Phase 7 (31-35 years)
- After phase 7
- Second and subsequent rotation
- Natural Reserve
- Minimal intervention
- Long term retention
- Low impact silviculture
- Neighbouring woodland
- Recently felled

View 2 Bruach Caorainn
 Grid Ref: NN416001
 Date: 22nd January 2018

Visualisation of future habitat and species

Visualisation year

- 2018
- 2028



NB. changes to neighbouring woodland are not illustrated

-  Sitka spruce
-  Norway spruce
-  Scots pine
-  Lodgepole pine
-  Larch
-  Douglas fir
-  Mixed conifers
-  Ash
-  Oak
-  Beech
-  Birch
-  Mixed broadleaves
-  Neighbouring woodland
-  Recently felled

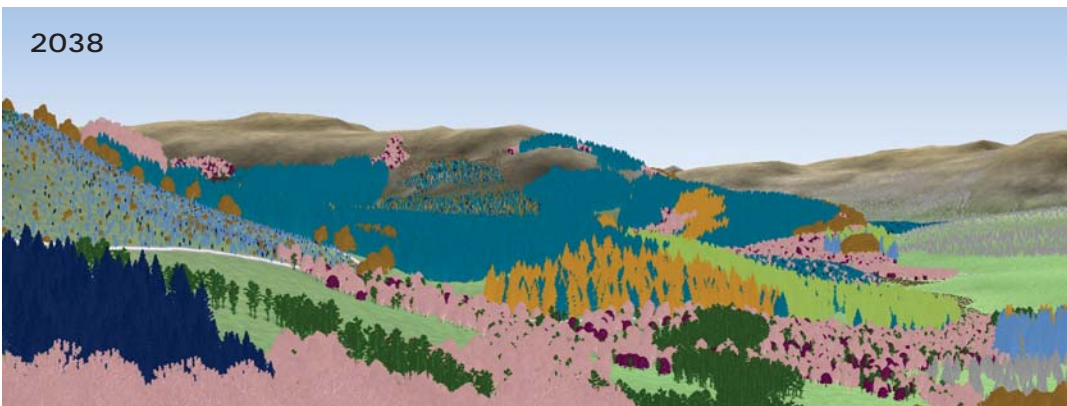
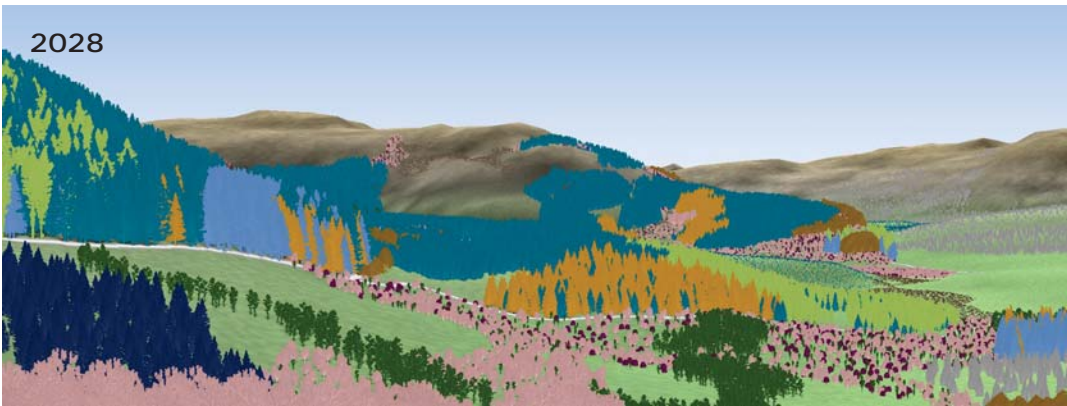
View 2 Bruach Caorainn
 Grid Ref: NN416001
 Date: 22nd January 2018

Visualisation of future habitat and species

Visualisation year

2028

2038



NB. changes to neighbouring woodland are not illustrated

-  Sitka spruce
-  Norway spruce
-  Scots pine
-  Lodgepole pine
-  Larch
-  Douglas fir
-  Mixed conifers
-  Ash
-  Oak
-  Beech
-  Birch
-  Mixed broadleaves
-  Neighbouring woodland
-  Recently felled

View 2 Bruach Caorainn
 Grid Ref: NN416001
 Date: 22nd January 2018

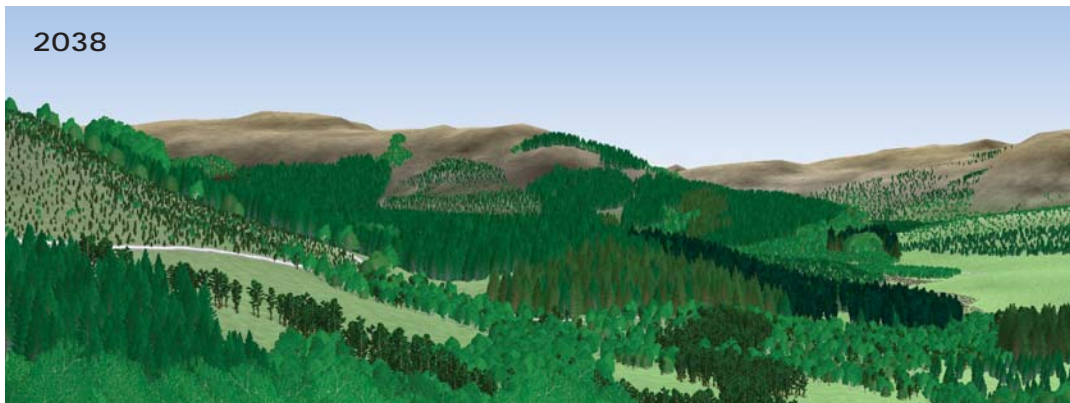
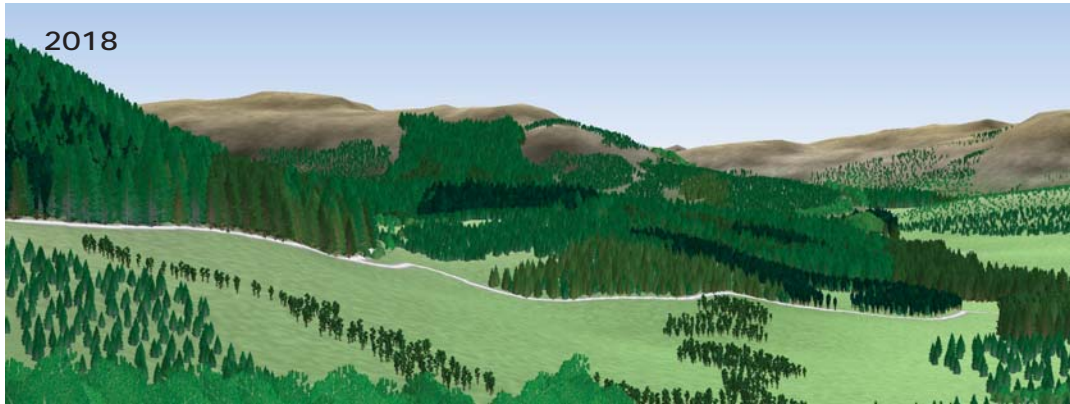
Visualisation of future
 habitat and species

Visualisation year

2018

2038

Perspectives produced using
 natural colour - not shown on key



NB. changes to neighbouring woodland are not illustrated